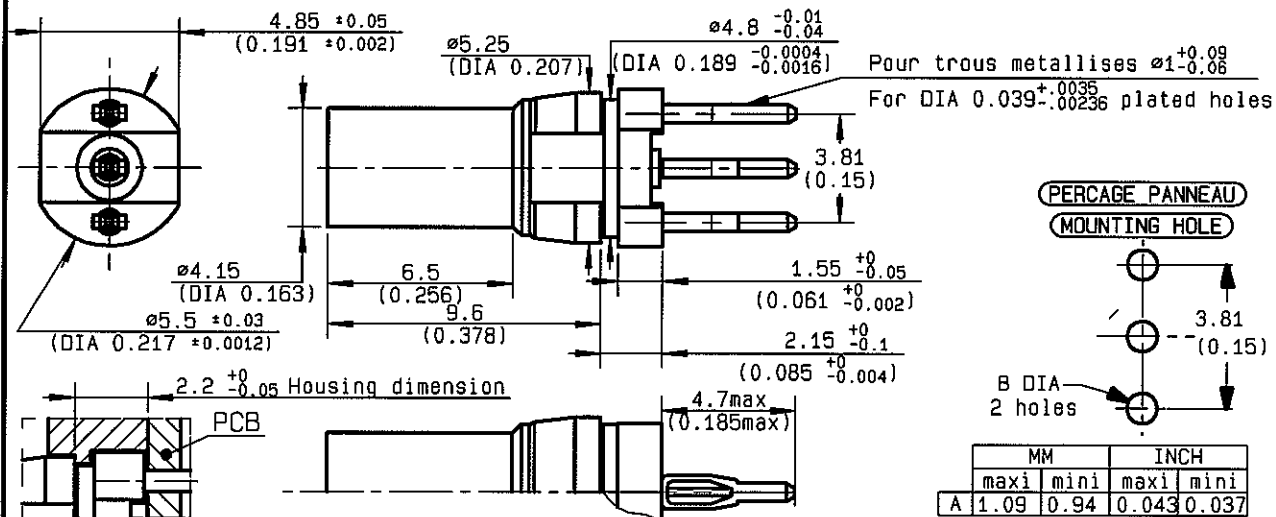


**STRAIGHT JACK RECEPTACLE FOR PCB
PRESS FIT LEGS - PACK 100**

R120.415.500
SERIES T1.0-2.3



NOMINAL IMPEDANCE	50 Ω
FREQUENCY RANGE	0-4 GHz
TEMPERATURE RATING	-55/+155 °C
V.S.W.R	1.22 + 0 x F(GHz)Maxi
RF INSERTION LOSS	NA √F(GHz) dB Maxi
VOLTAGE RATING	350 Veff Maxi
DIELECTRIC WITHSTANDING VOLTAGE	1000 Veff Mini
INSULATION RESISTANCE	5000 MΩMini
HERMETIC SEAL	NA Atm.cm ³ /s
LEAKAGE (pressurized only)	NA
MECHANICAL DURABILITY	100 Cycles
WEIGHT	.98 gr
SPECIFICATION	

CABLES :	
OTHERS CHARACTERISTICS	
CABLE RETENTION	NA N Mini
CENTER CONTACT RETENTION	
Axial force - mating end	30 N Mini
Axial force - opposite end	30 N Mini
Torque	NA cm.N Mini
RECOMMENDED TORQUES	
Mating	NA cm.N
Panel nut	NA cm.N
Clamp nut	NA cm.N

CONNECTOR PARTS	MATERIALS	FINISH
		(all values are given in micrometers)
BODY	BRASS	GOLD 0.5 OVER NICKEL 2
OUTER CONTACT		
CENTER CONTACT	BERYLLIUM COPPER	GOLD 1.3 OVER NICKEL 2
INSULATOR	PTFE	-
GASKET		-
OTHERS PIECES	PHOSPHOR BRONZE	Tin 3 over nickel 1-2

ANNEQUIN

ISSUE
0540B

CREATION DATE
08/07/1997

FILE PART-NUMBER
97-0130-545



RADIALL®

The information given here is subject to change without notice.
Design changes may be in order to improve the product.

Connect to the future

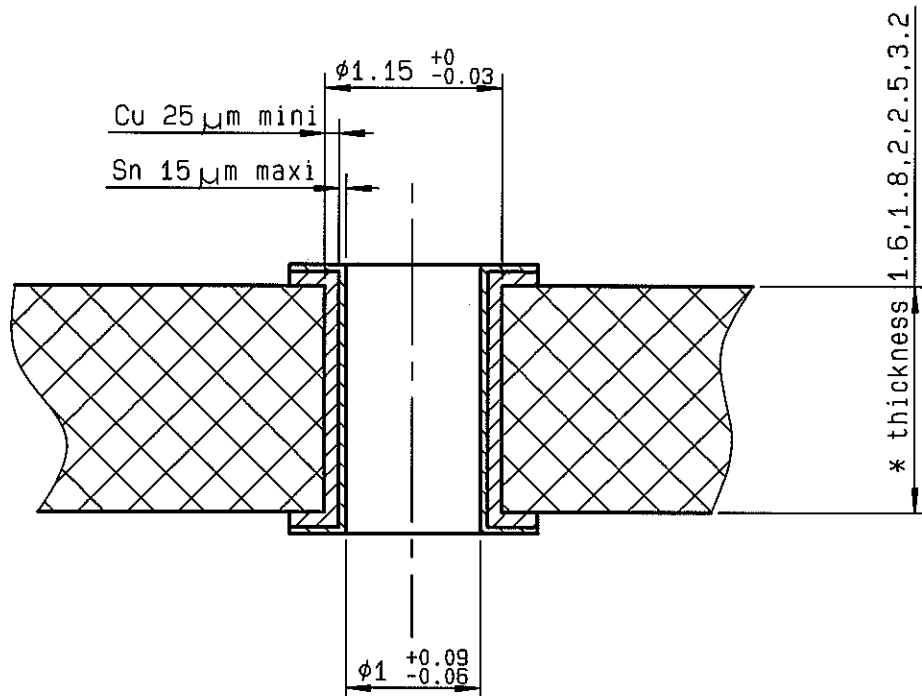


R120.415.500

ISSUE 0540B

SERIES T1.0-2.3

PC BOARD MATERIAL	GLASS FIBRE EPOXYD NEMA:G10,G11,FR4,FR5 DIN 40802 : EP-GC 01 , EP-GC 02
THICKNESS	1.6 mm *
HOLE	FOR 1mm COMPLIANT PIN
BORE-HOLE	$\phi 1.15 \text{ } 0/-0.03$
COPPER	$> 25 \mu\text{m}$
TIN	$< 15 \mu\text{m}$
FINAL DIAMETER	$\phi 1 \text{ } +0.09/-0.06$



ANNEQUIN



R120.415.500

ISSUE 0540B

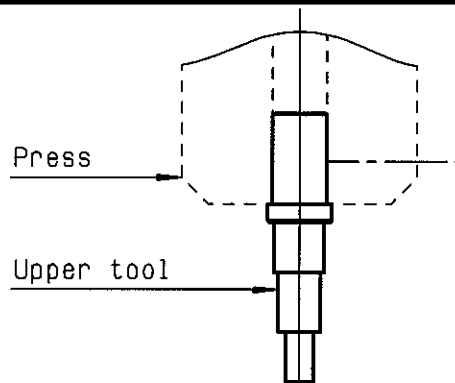
SERIES T1.0-2.3

MOUNTING INSTRUCTIONS ON THE PCB
STRAIGHT CONNECTORS WITH PRESS-FIT TERMINATION

①

Slide the upper tool (R282.878.177) into the machine (press).

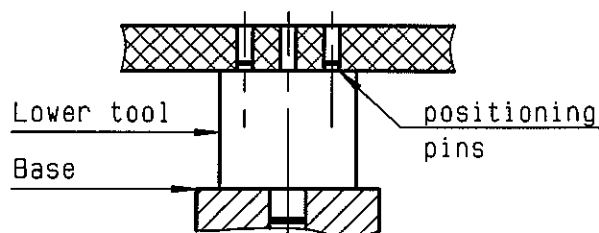
-
-
-



②

Slide the lower tool (R282.878.180) into the base and place correctly the PCB on this tool .(positioning pins)

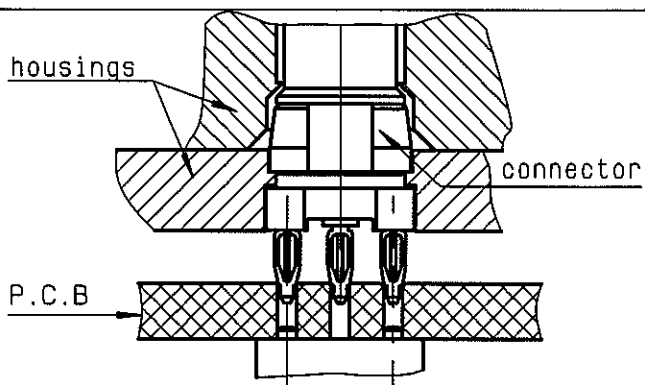
-
-
-



③

Place correctly the straight connector(s) with press-fit termination on the PCB and introduce the press-fit extremity in the holes of the PCB .

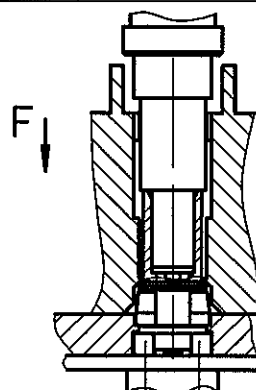
-
-
-



④

Push on the top (about 300 N by connector) until total insertion .(in direction F) (Push connector body until the Lower housing against PCB) .

Remove the assembly(connector(s)+housings +PCB) .



ANNEQUIN